

1. Survey purpose

This survey aims to study the employment status of the technical intern trainees who returned to their home countries in FY2017 (hereinafter referred to as “ex-trainees”), support for employment and technology transferring, and progress of the technical intern training during the training period, for supervising organizations and implementing organizations of individual-enterprise-type training (hereinafter referred to as "supervising organizations, etc.").

2. Target

Supervising Organizations, etc. which accepted the ex-trainees

3. Method

- (1) The OTIT sends the questionnaire to the supervising organizations, etc. that accepted the technical intern trainees
- (2) Respondents answer the questionnaire and returns it to the OTIT by mail.
- (3) The questionnare is multiple-choice style with some free text spaces.

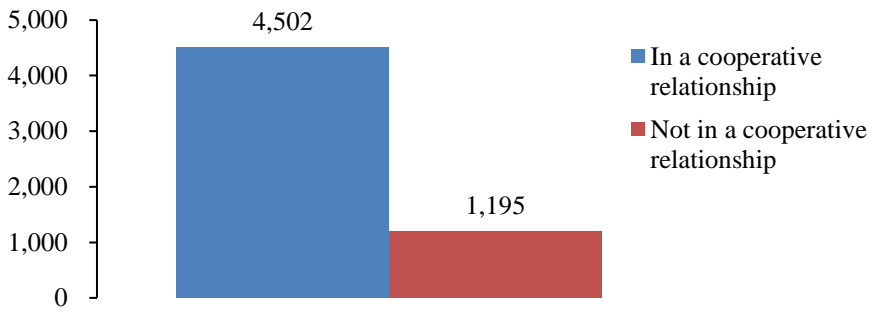
4. Number of respondents and response rate

Number of supervising organizations, etc. surveyed	Number of supervising organizations, etc. responded	Response rate
2,072	1,545	74.6%

Cooperative relationship between supervising organizations and sending organizations of trainees after returning to home countries

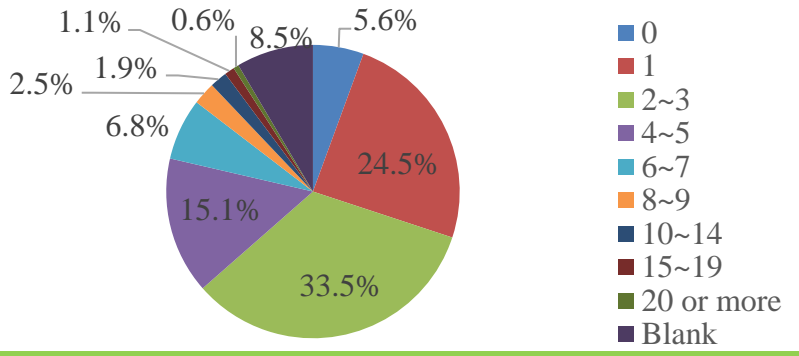
Cooperative relationship between supervising organizations and sending organizations

In relation to the survey on situations of ex-trainees after returning to their home countries, the number of sending organizations keeping a cooperative relationship with the supervising organizations was 4,502.



Situation of sending organizations in a cooperative relationship

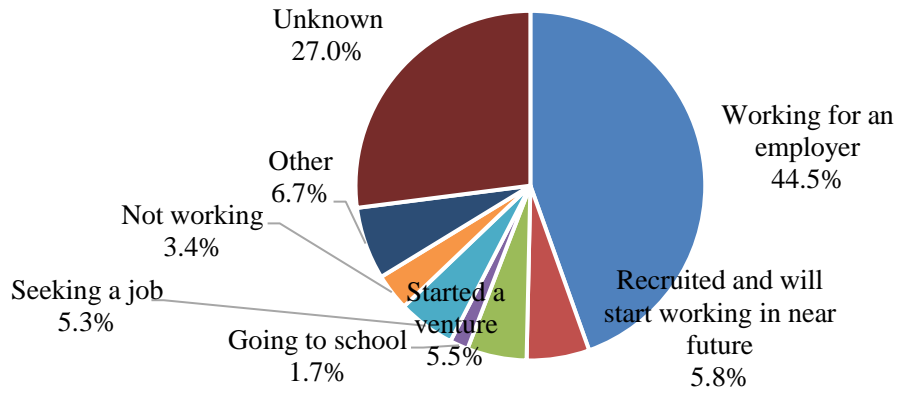
Regarding the number of sending organizations which the supervising organizations keep a cooperative relationship with, 33.5% of the supervising organizations answered "two or three", representing the largest share.



Employment status of the ex-trainees after returning to home countries

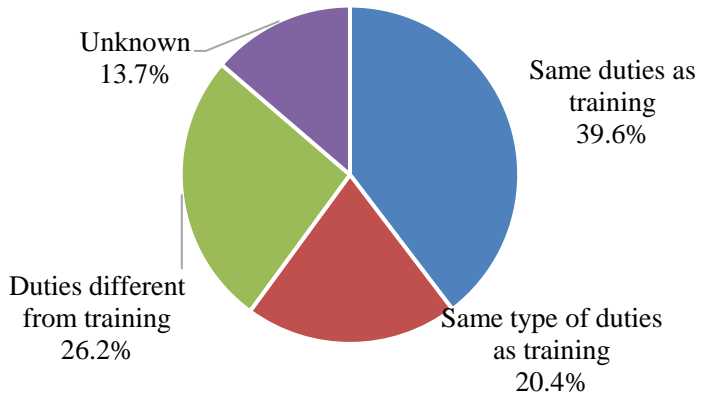
Employment status of ex-trainees after returning to home countries

In relation to the employment status after returning to their home countries, 55.9% of the respondents answered either "working as an employee" (44.5%), "scheduled to work as an employee" (5.8%) or "started an own business" (5.5%).



Specific job duties after returning to home countries

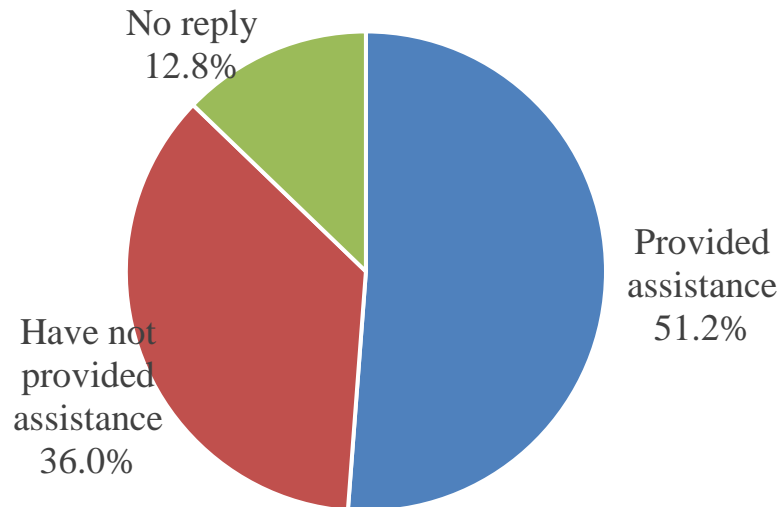
60.0% of the respondents answered that their specific job duties are "same as the training" (39.6%) or "same type of job duties as the training" (20.4%).



Assistance to the ex-trainees after returning to home countries

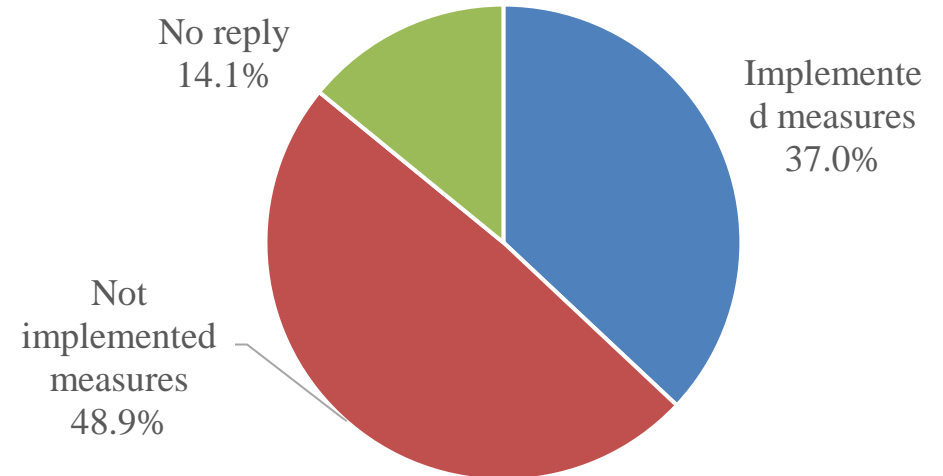
Assistance in job-seeking for the ex-trainees

51.2% of the supervising organizations, etc. answered that they provided assistance with the ex-trainees in job-seeking.



Measures to support skills transfer for the ex-trainees

37.0% of the supervising organizations, etc. answered that they took measures to support skills transfer for the ex-trainees after returning to their home countries.



Progress of technical intern training during the training period

Progress of technical intern training of trainees

94.4% of the supervising organizations, etc. answered that the trainees currently staying in Japan are proceeding their own technical intern training plans as scheduled.

